

Trajectory Forecast

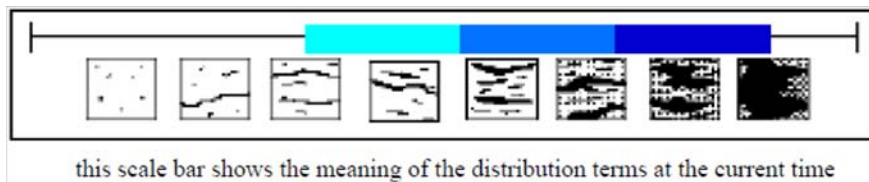
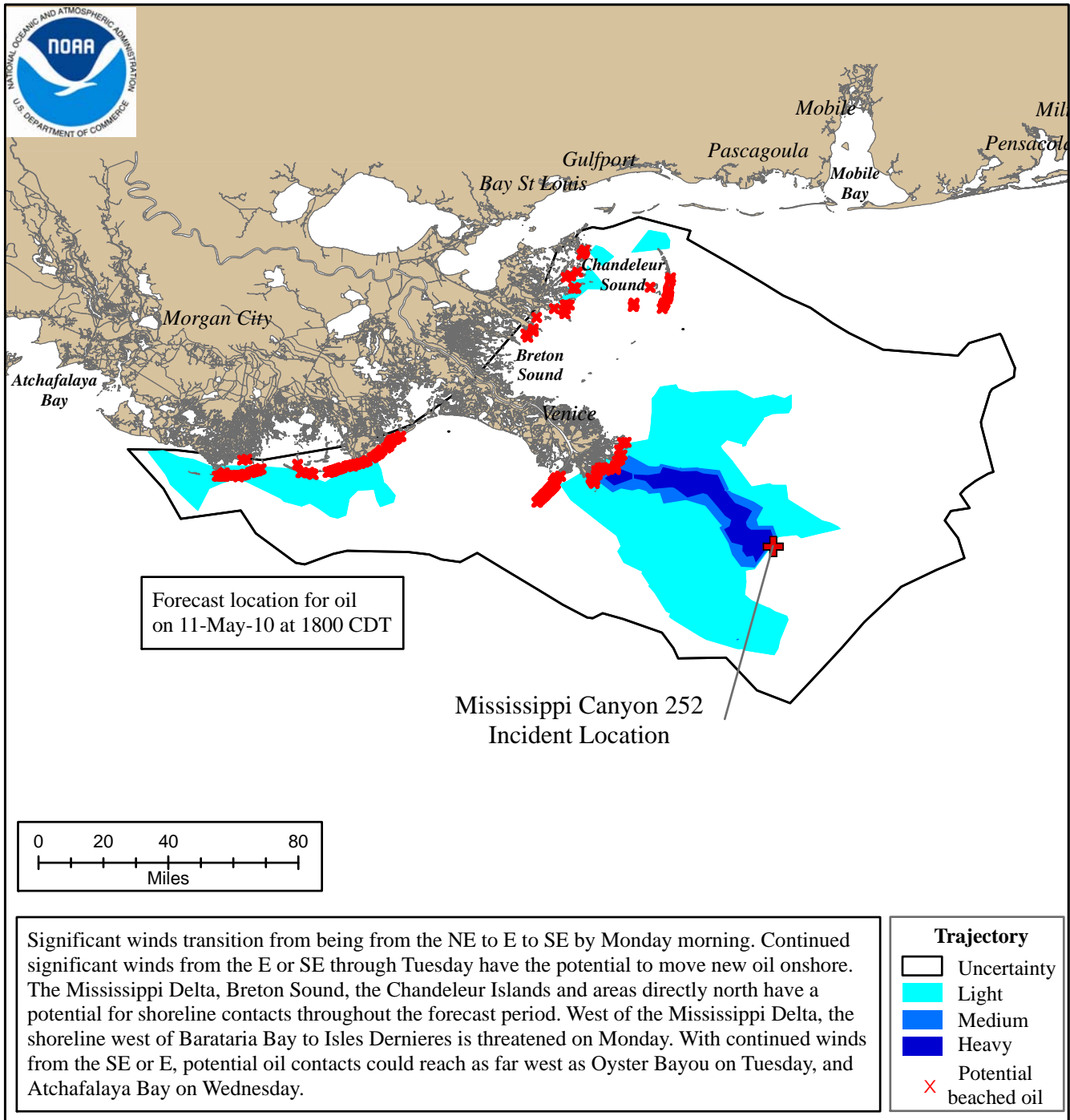
Mississippi Canyon 252

NOAA/NOS/OR&R

Estimate for: 1800 CDT, Tuesday, 5/11/10

Date Prepared: 2100 CDT, Sunday, 5/09/10

This forecast is based on the NWS spot forecast from Sunday, May 9th PM. Currents were obtained from the NOAA Gulf of Mexico, West Florida Shelf/USF, Texas A&M/TGLO, and NAVO/NRL models and HFR measurements. The model was initialized from Sunday satellite imagery and analysis provided by NOAA/NESDIS, and Saturday/Sunday overflight observations. The leading edge may contain tarballs that are not readily observable from the imagery (hence not included in the model initialization). Oil near bay inlets could be brought into that bay by local tidal currents.



Next Forecast:
May 10th PM