

# Nearshore Surface Oil Forecast Deepwater Horizon MC252

NOAA/NOS/OR&R

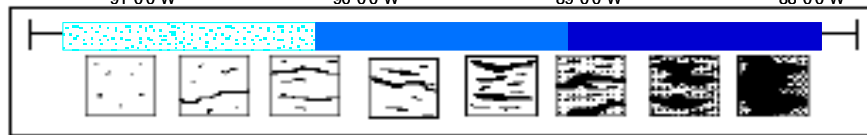
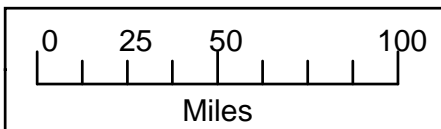
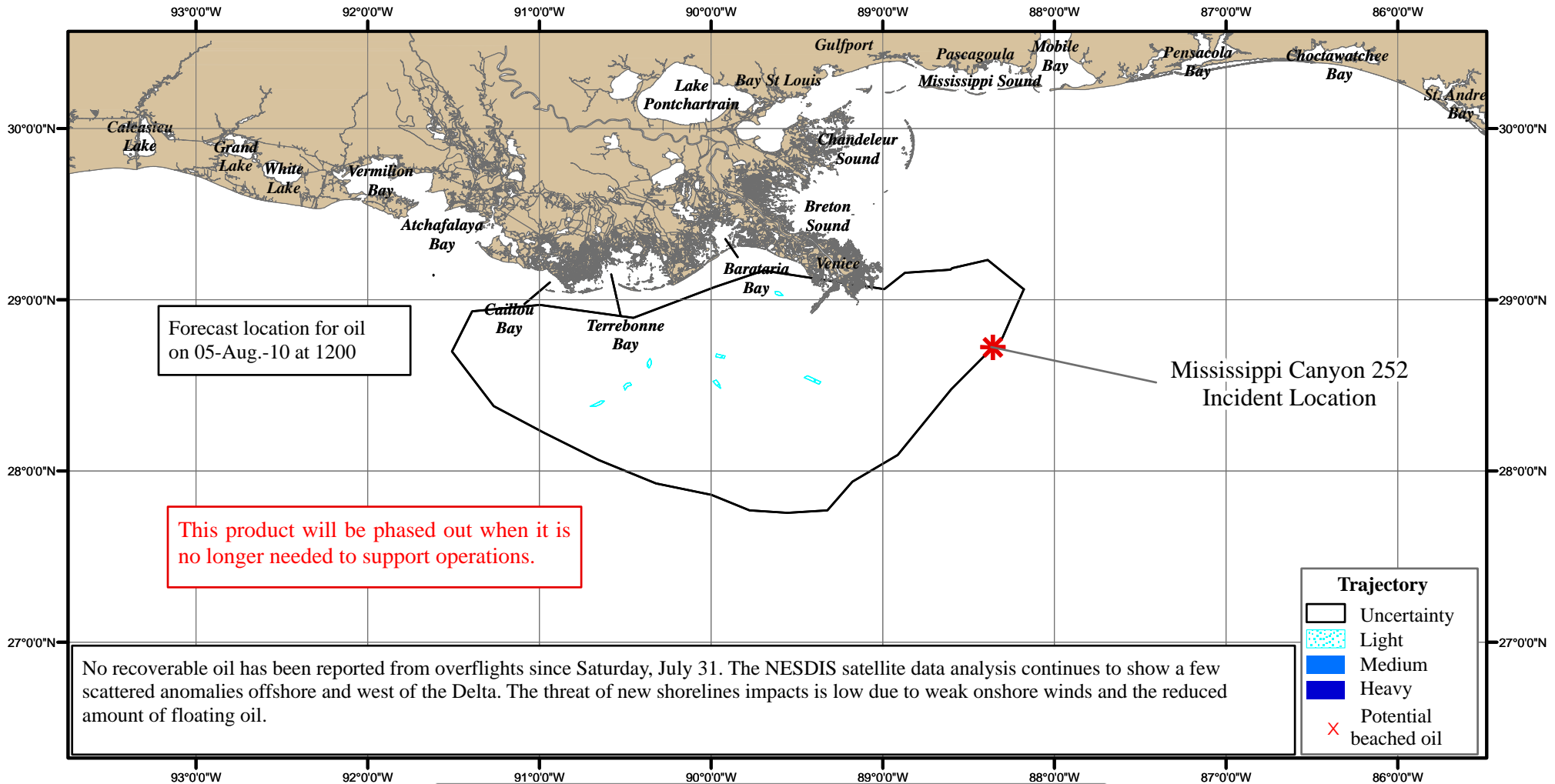
Nearshore



Estimate for: 1200 CDT, Thursday, 8/05/10

Date Prepared: 2000 CDT, Monday, 8/02/10

This forecast is based on the NWS spot forecast from Monday, August 2 PM. Currents were obtained from several models (NOAA Gulf of Mexico, West Florida Shelf/USF, TGLO/TAMU, NAVO/NRL) and HFR measurements. The model was initialized from Sunday-Monday satellite imagery analysis (NOAA/NESDIS) and Monday overflight observations. The leading edge may contain tarballs that are not readily observable from the imagery (hence not included in the model initialization). Oil near bay inlets could be brought into that bay by local tidal currents.



this scale bar shows the meaning of the distribution terms at the current time

Next Forecast:  
Aug. 3rd PM