

Offshore Surface Oil Forecast Deepwater Horizon MC252

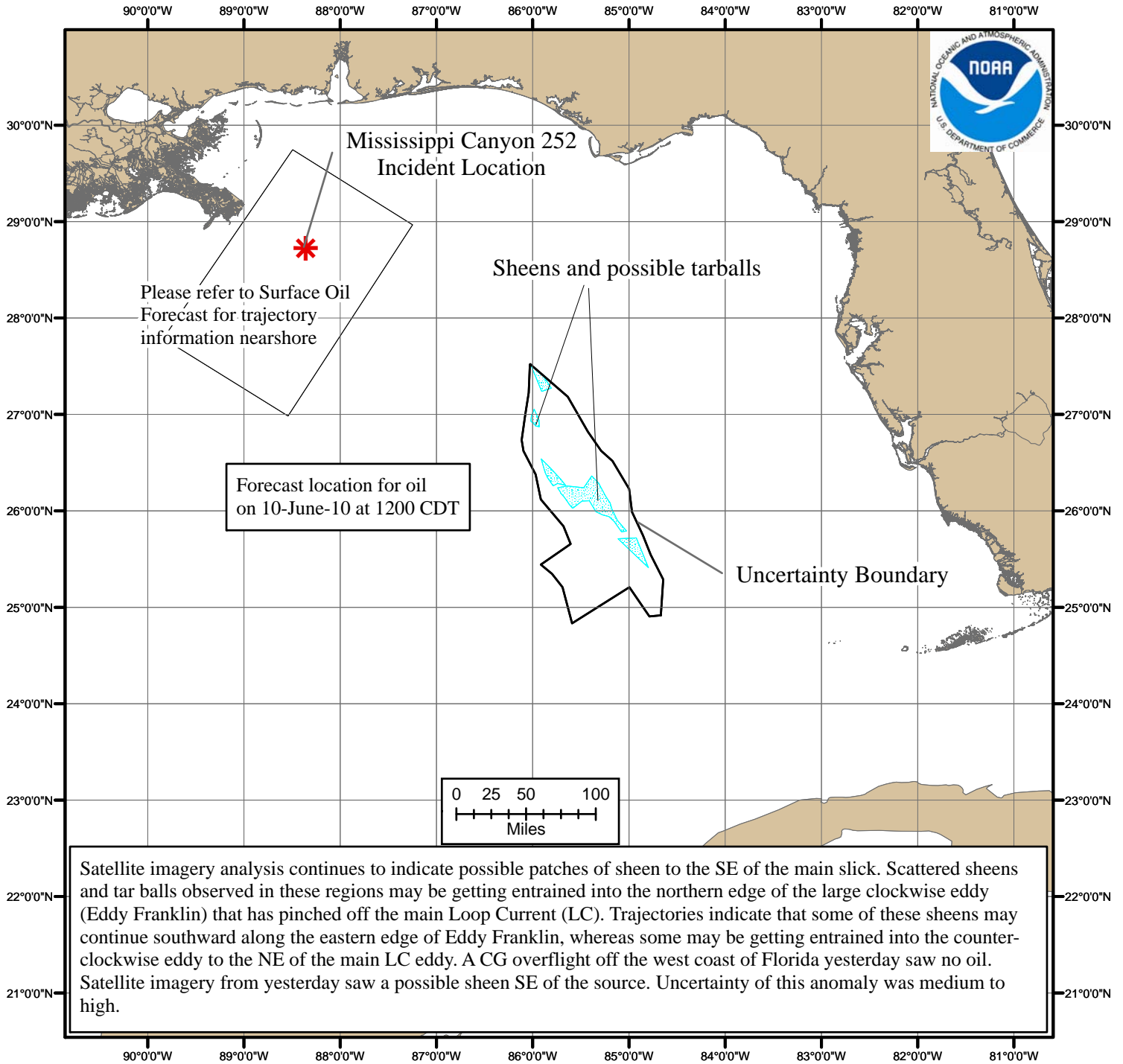
NOAA/NOS/OR&R

Offshore

Estimate for: 1200 CDT, Thursday, 6/10/10

Date Prepared: 1900 CDT, Wednesday, 6/09/10

Currents were obtained from three models: NOAA Gulf of Mexico, NavO/NCOM, and NC St./SABGOM. Each includes Loop Current dynamics. Gulf wide winds were obtained from the gridded NCEP product. The model was initialized from June 8/9 satellite imagery analysis (NOAA/NESDIS) and ship report from June 8. The leading edge may contain tarballs that are not readily observable from the imagery (hence not included in the model initialization).



this scale bar shows the meaning of the distribution terms at the current time

Next Forecast:
June 10th PM